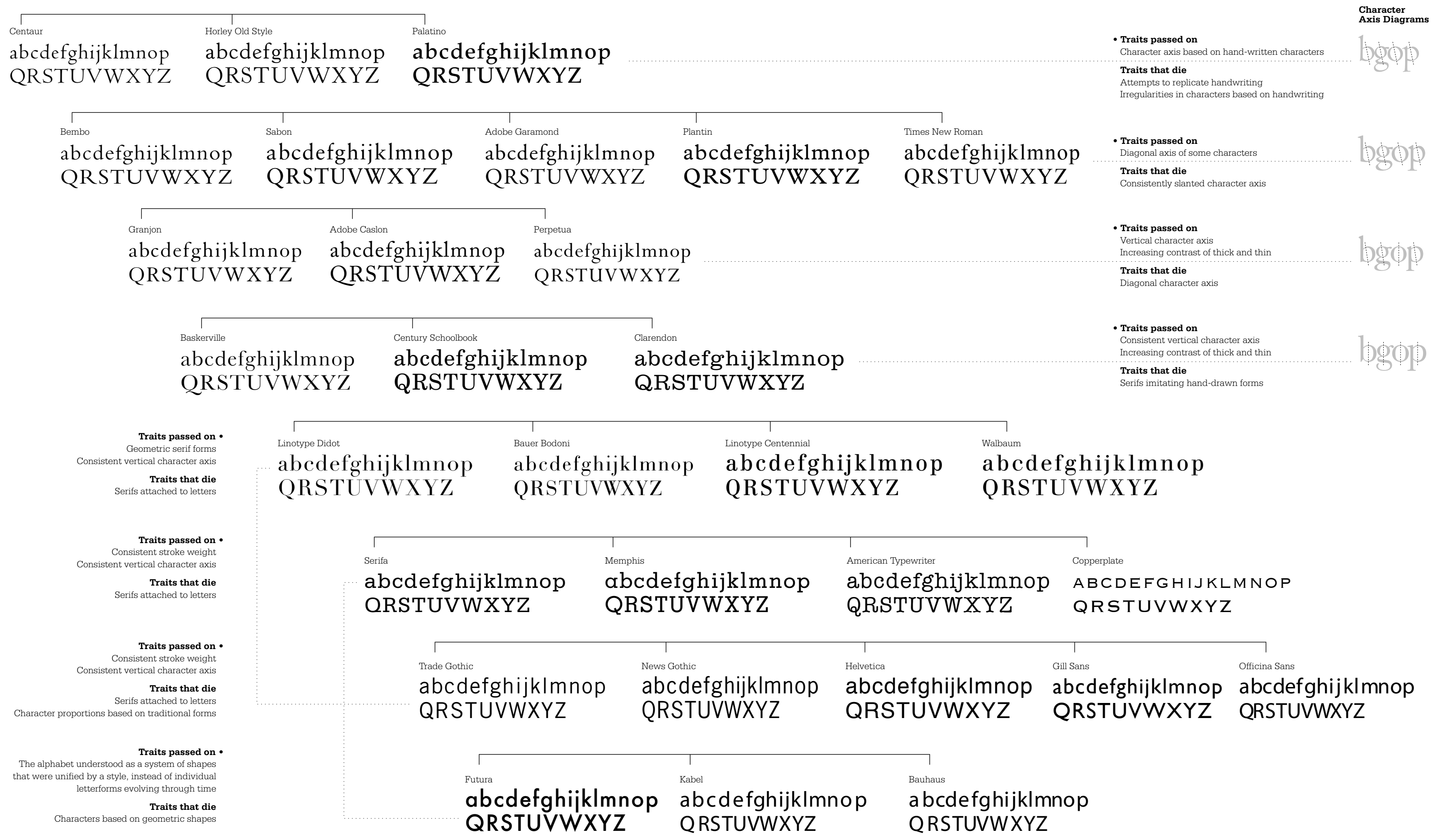


The Evolution of Letterforms

A roughly chronological diagram of typographic characteristics that have been passed on in the history of the printed letterform.



Character Axis Diagrams



- **Traits passed on**
Character axis based on hand-written characters
- **Traits that die**
Attempts to replicate handwriting
Irregularities in characters based on handwriting



- **Traits passed on**
Diagonal axis of some characters
- **Traits that die**
Consistently slanted character axis



- **Traits passed on**
Vertical character axis
Increasing contrast of thick and thin
- **Traits that die**
Diagonal character axis



- **Traits passed on**
Consistent vertical character axis
Increasing contrast of thick and thin
- **Traits that die**
Serifs imitating hand-drawn forms