

Connecting to Your Website

Using Dreamweaver's FTP

You could open up Dreamweaver and start working on files, however it wouldn't take long for you to realize that you have a mess on your hands. With any project, the success of it depends on the planning you put into it before hand.

Websites are merely a collection of files and folders. The topmost folder is referred to as the root folder, this folder contains all the files necessary for the site to function. Sub folders are used to store asset files or images, they can also contain a whole other site. While the whole site structure does not need to be planned out before you start, and doesn't hurt to have as much of the site structure in place in the beginning, there are some things that you will always need that we can start with.

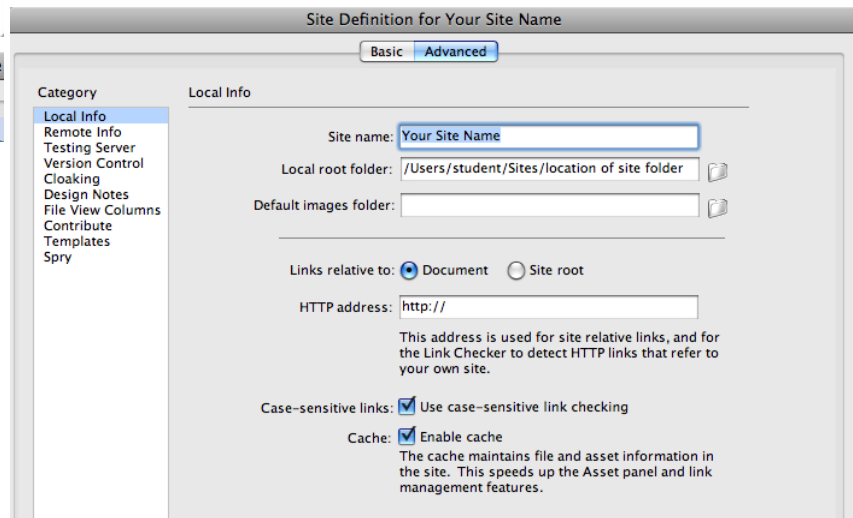
Defining your site in Dreamweaver basically just tells Dreamweaver where your site lives on your computer, allowing Dreamweaver to manage and control those files. Without defining a site, Dreamweaver won't be able to correctly create or resolve links or add certain features to your pages. It is also useful for when you want to upload your files to the web, and lets Dreamweaver know where to upload those files. At home you only have to do this once for each different site, but every time you come into the 300 studio you and open Dreamweaver you have to set up your site because we have Deep Freeze which resets everything once the computer has been turned off.

Setting up the connection

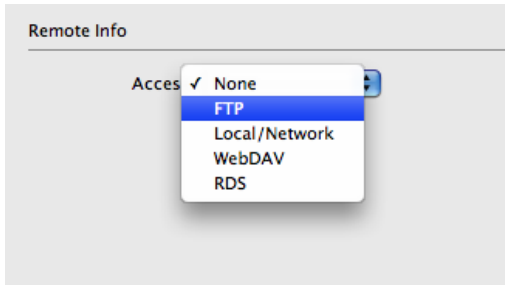


To set up a new site inside of Dreamweaver go to : Sites > New Site.

Now when this first comes up it is in the basic wizard mode. There 2 options on the tabs up at the top, basic and advanced. Lets switch over to advanced, and enter the name you want to use for your site. This name can be anything as it is only used inside of Dreamweaver, but name it something helpful for you to remember later on. Now we are done in this category, so go over to the left column, and choose 'Remote Info'.



This next area wants to know how we connect to our remote server. This is used when you want to upload your files to the web for everyone to see. By default it is set to none, so set it to 'FTP' to see more options.

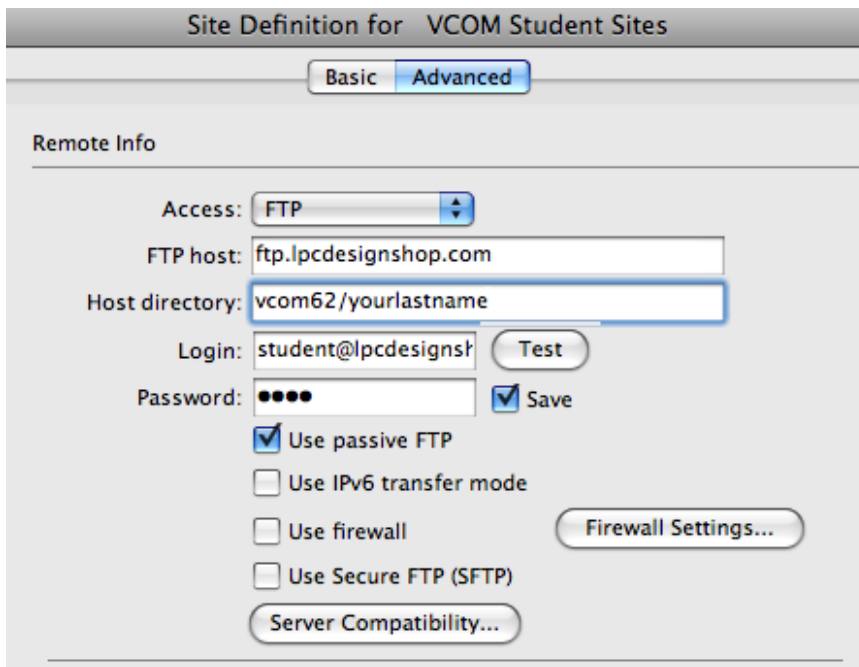


Put in the info for the 'Hostname or FTP address:' in this case 'ftp.lpcdesignshop.com'. For most websites this is usually just the URL of your site, with an FTP in front instead of a 'www' i.e 'FTP.yourSiteName.com'.

As a student connecting you need to set this to vcom62/yourlastname (if you have your own site, your host company will tell you what needs to go here if anything).

Next is the 'FTP Login', enter 'student@lpcdesignshop.com'.

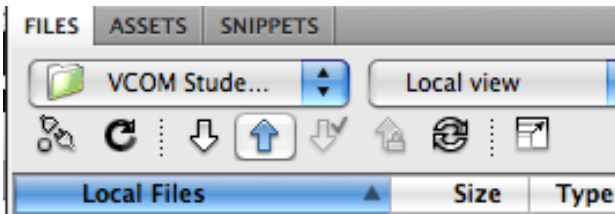
Lastly we need to enter the password to connect to our site. The password for the site is the same as connecting to the server, 'vcom' (the login info is case sensitive). Make sure save is checked so it saves your login id and password.



Test your connection to make sure it works and everything was entered correctly. Your settings should look like the image below. If it works, go ahead and hit 'Ok'.

Uploading Your Files

To upload your ENTIRE SITE, make sure you are in the local view, and have the site folder selected in the files view. Click the Blue Arrow to Upload your site.



For uploading INDIVIDUAL FILES, select which files you want to upload. For multiple files you can hold SHIFT to select many files, or you can hold the APPLE key to select multiple individual files. Then with the files selected click the blue arrow.

NOTE :: If your files already exist in the sky on your web server, you will overwrite those files on the server, with the ones you upload. So make sure you are uploading the correct file(s).

Viewing You Files

Type into the address bar of a browser, sites.lpcdesignshop.com/vcom62/. That will take you to the class folder for everyones website. If you want to get to your site, you can either 1) navigate your way there by clicking the link, or 2) if you know the name of your folder, type it into the address bar after `/vcom55/` (i.e. `.../vcom55/yourlastname`).